



THE NATIONAL CENTER ON
Program Management
and Fiscal Operations

Connecting the New HSPPS to Management Systems: Providing High Quality Services



Presented by:
Leslie Porter
Grantee Specialist



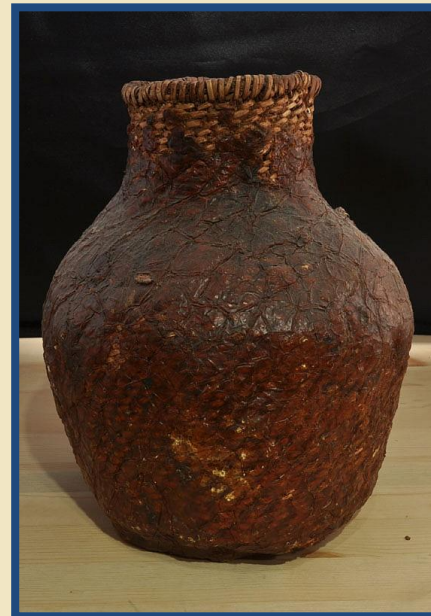
Anticipated Outcomes

- Recognize the ten Head Start Systems and the Federal Regulations they support.
- Recognize and demonstrate how Head Start systems support Positive Child and Family outcomes.
- Demonstrate team work when applying a systems approach to resolving scenarios.
- Demonstrate the ability to access and utilize Early Childhood Learning and Knowledge Center (ECLKC) resources.



THE NATIONAL CENTER ON
Program Management
and Fiscal Operations

Basket Story





THE NATIONAL CENTER ON
**Program Management
and Fiscal Operations**



HER FIRST BASKET

Adapted from the
TULALIP TRIBAL
stories





THE NATIONAL CENTER ON
Program Management
and Fiscal Operations

Child and Family Outcomes

- Education
- Disabilities
- Health
- Family Engagement
- Community Partnerships





THE NATIONAL CENTER ON
**Program Management
and Fiscal Operations**

Set Goals

Head Start Program Performance Standards

45 CFR Chapter XIII
September 2016

U.S. Department of Health and Human Services
Administration for Children and Families
Office of Head Start



PMFO



THE NATIONAL CENTER ON
Program Management
and Fiscal Operations

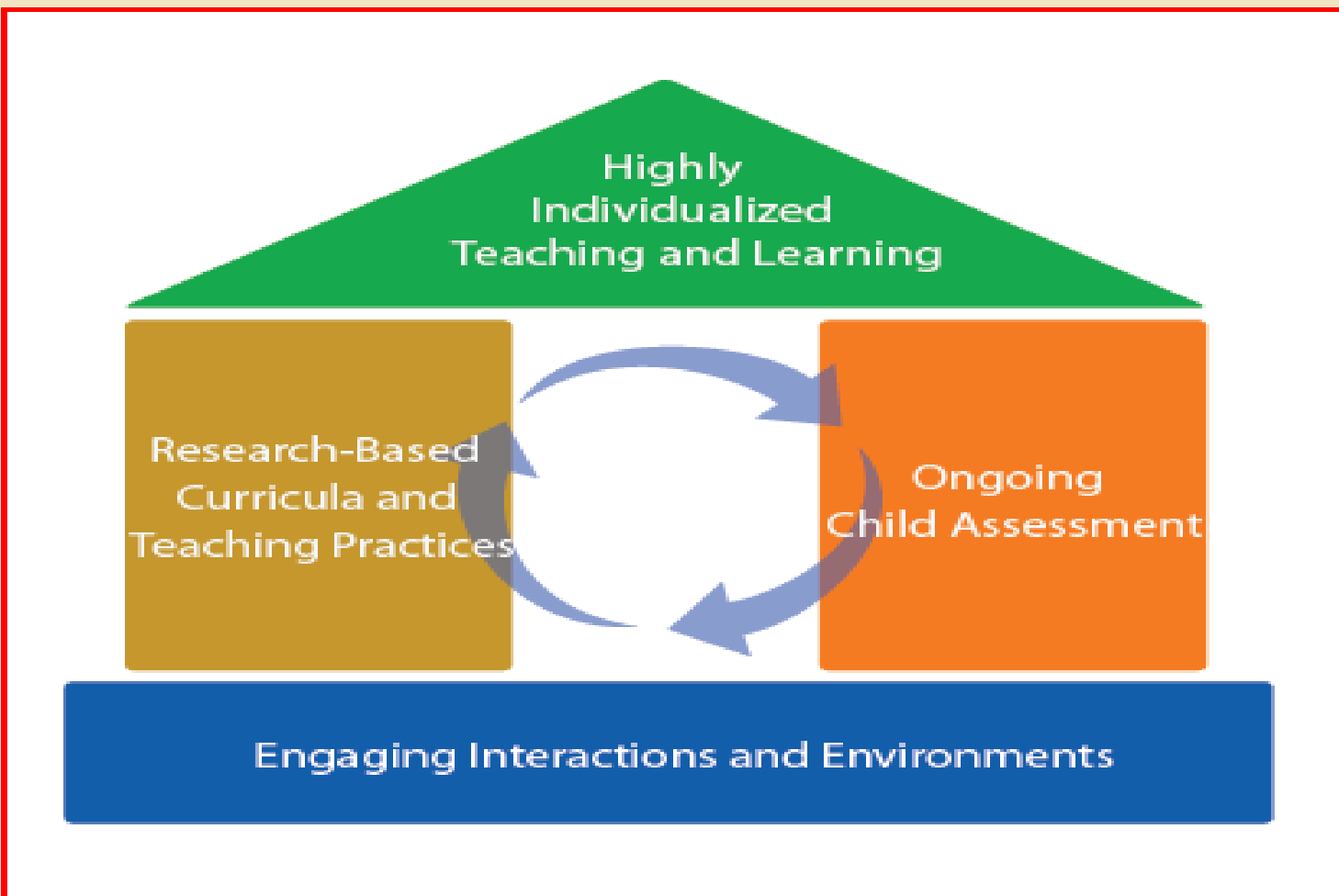
School Readiness

	Central Domains				
	Approaches to Learning	Social and Emotional Development	Language and Literacy	Cognition	Perceptual, Motor, and Physical Development
Infant / Toddler Domains	Approaches to Learning	Social and Emotional Development	Language and Communication	Cognition	Perceptual, Motor, and Physical Development
Preschooler Domains	Approaches to Learning	Social and Emotional Development	Language and Communication	Mathematics Development	Perceptual, Motor, and Physical Development
			Literacy	Scientific Reasoning	



THE NATIONAL CENTER ON
Program Management
and Fiscal Operations

Plan and Implement





Family Engagement



- Is Developmental
- Crosses Learning Contexts
- Includes both, involvement and engagement
- Is made with reciprocal, culturally responsive relationships



THE NATIONAL CENTER ON
Program Management
and Fiscal Operations

Engagement is Important Because.....



“When you work hand-in-hand with families to build trusting relationships, you help families support their children to reach their fullest potential.”

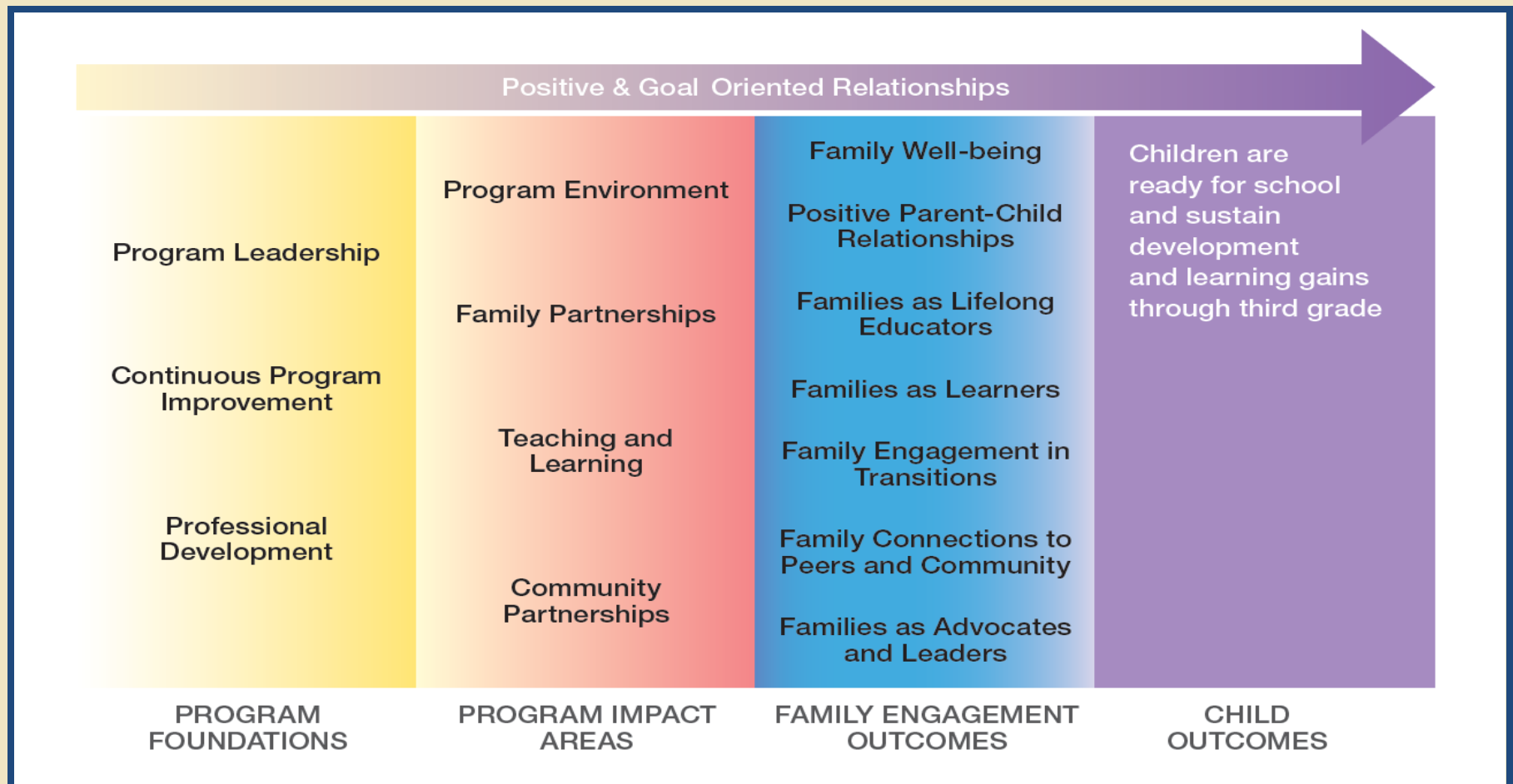
Makers of Progress



THE NATIONAL CENTER ON
**Program Management
and Fiscal Operations**

Parent, Family and Community Engagement Framework

When parent and family engagement activities are systematic and integrated across program foundations and program impact areas, family engagement outcomes are achieved, resulting in children who are healthy and ready for school. Parent and family engagement activities are grounded in positive, ongoing, and goal-oriented relationships with families.



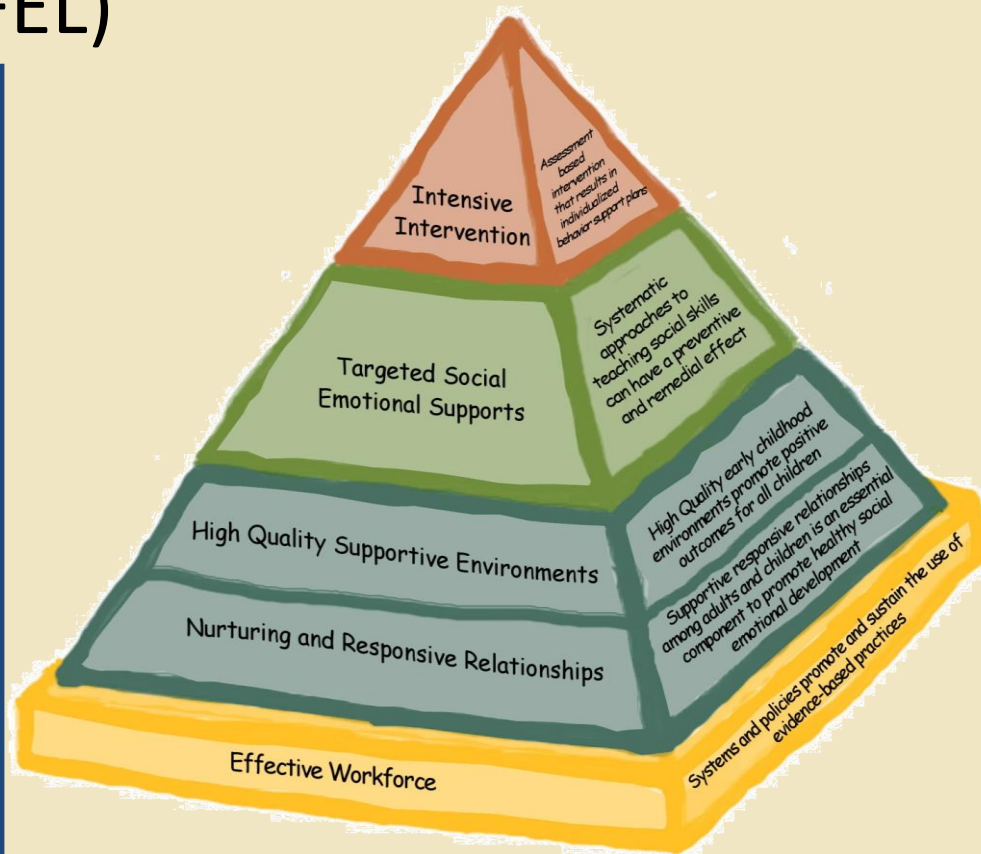


THE NATIONAL CENTER ON
Program Management
and Fiscal Operations

Center on the Social and Emotional Foundations for Early Learning (CSEFEL)

Goal:

To strengthen the capacity of Head Start and Child Care to promote the social and emotional foundations of early learning.





YOUNG CHILDREN WITH SPECIAL NEEDS REQUIRE:

- 1 **Their families, early care and education staff, and other service providers to work together as early as possible because ...**

this creates a solid foundation to support optimal development.



2



- Early intervention screening, evaluation, and appropriate services as early as possible because ...**

strengthening brain and physical development early on can reduce the prevalence of ongoing and future challenges.



THE NATIONAL CENTER ON
Program Management
and Fiscal Operations

Assess and Aggregate: Four Data Activities to Support Progress Toward Positive Outcomes





THE NATIONAL CENTER ON
Program Management
and Fiscal Operations

Determine Priorities for Continuous Quality Improvement





Health

- Health Services Management
- Physical Health
- Oral Health
- Mental Health Services
- Nutrition
- Safety and Injury Prevention
- Health Literacy and Family Engagement



THE NATIONAL CENTER ON
**Program Management
and Fiscal Operations**



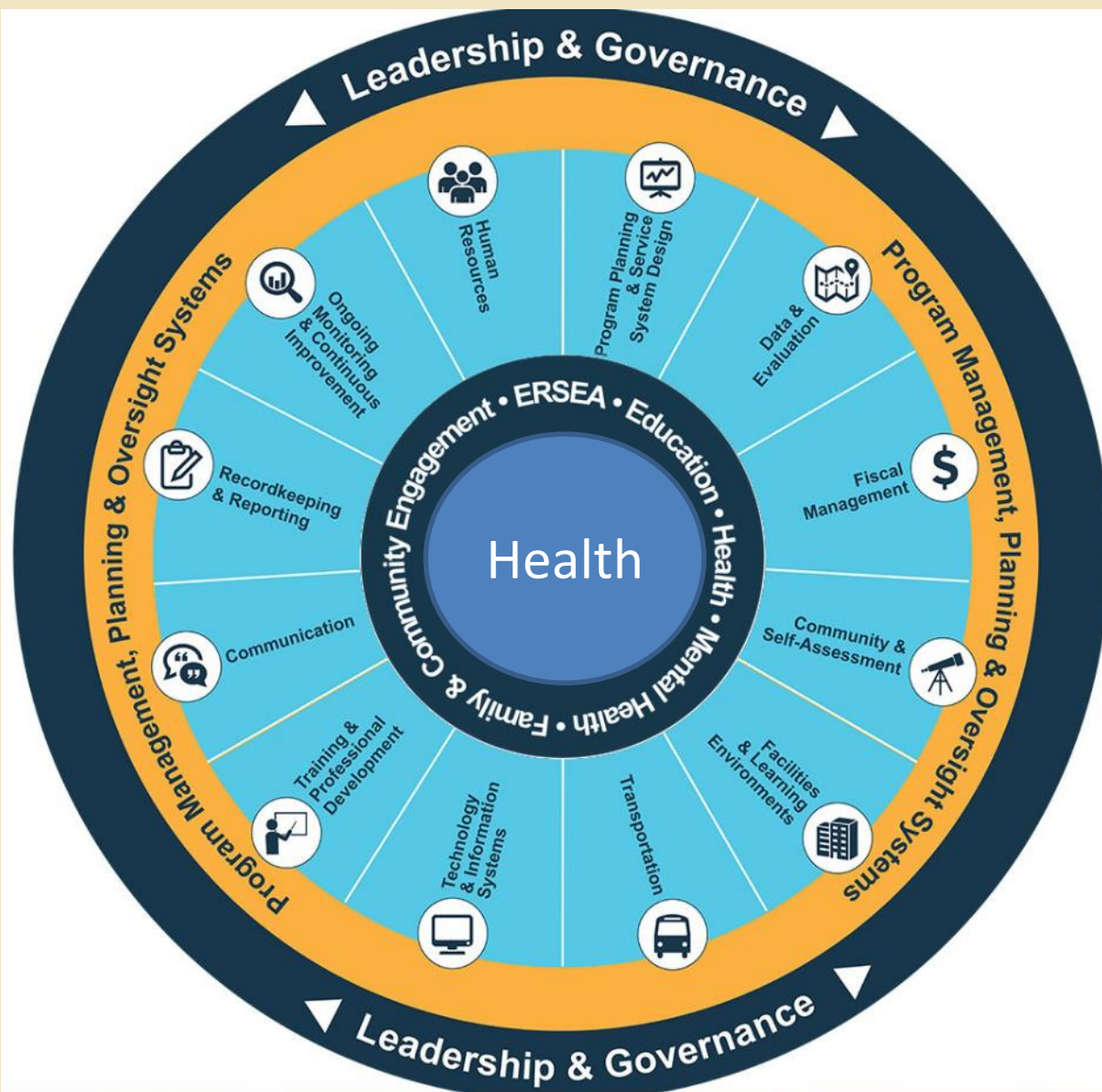


THE NATIONAL CENTER ON
**Program Management
and Fiscal Operations**





THE NATIONAL CENTER ON
Program Management
and Fiscal Operations





THE NATIONAL CENTER ON
Program Management
and Fiscal Operations

Head Start A to Z

Leadership, & Systems, for High Quality Services

Leadership



“Leadership is the art of accomplishing more than the science of management says is possible.”

—The Leadership of Colin Powell



**“Credibility is
the foundation
of leadership.”**

—*The Truth About Leadership*
Kouzes and Pozner



“Leadership is the skill of influencing people to work enthusiastically toward goals identified as being for the common good.”

—The Servant



**Leadership is the
exercise of
power and
influence.**

—Resonant Leadership



**“Leadership is a
matter of how to
be . . . not how
to do.”**

*—Frances Hesselbein
CEO of American Girls of the USA
(1976–1990)
Founder of the Drucker Foundation
School of Management*





Create your own
leadership quote or
illustration.

Leadership

New leaders need support . . .

. . . to keep the passion;

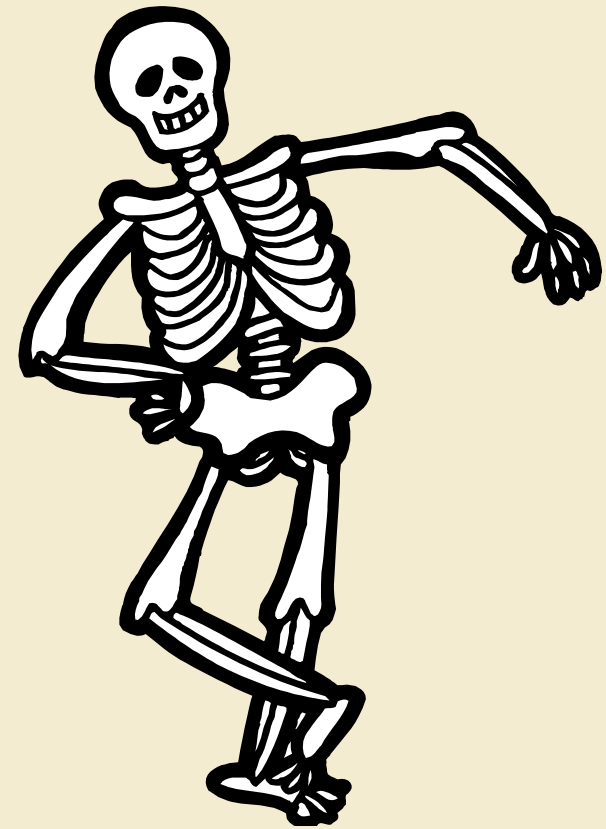
. . . through the pain; and

. . . to establish and maintain priorities.



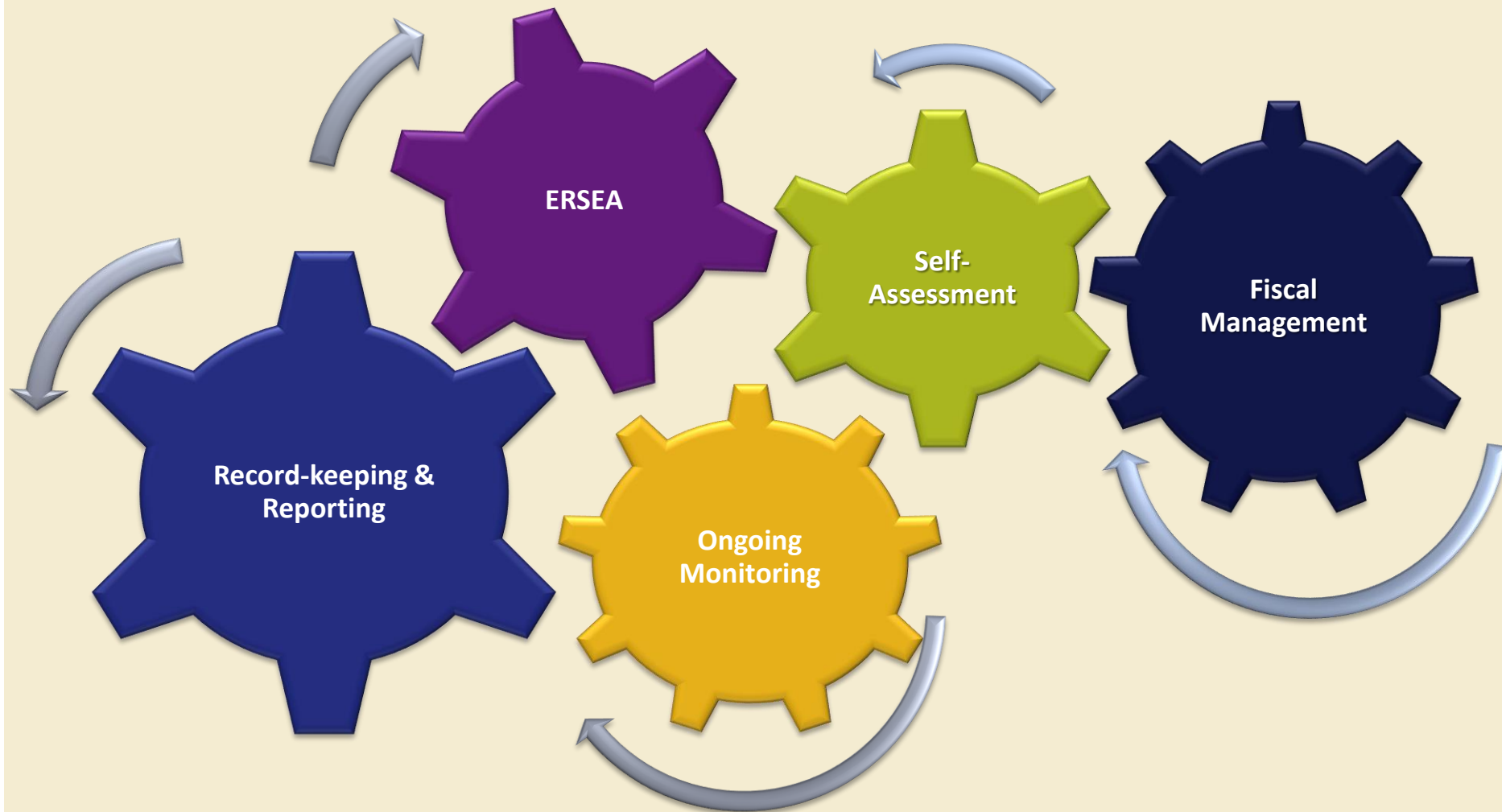
What Is a System?

A set of interacting, interrelated, or interdependent parts that form a complex and unified whole that has a specific purpose





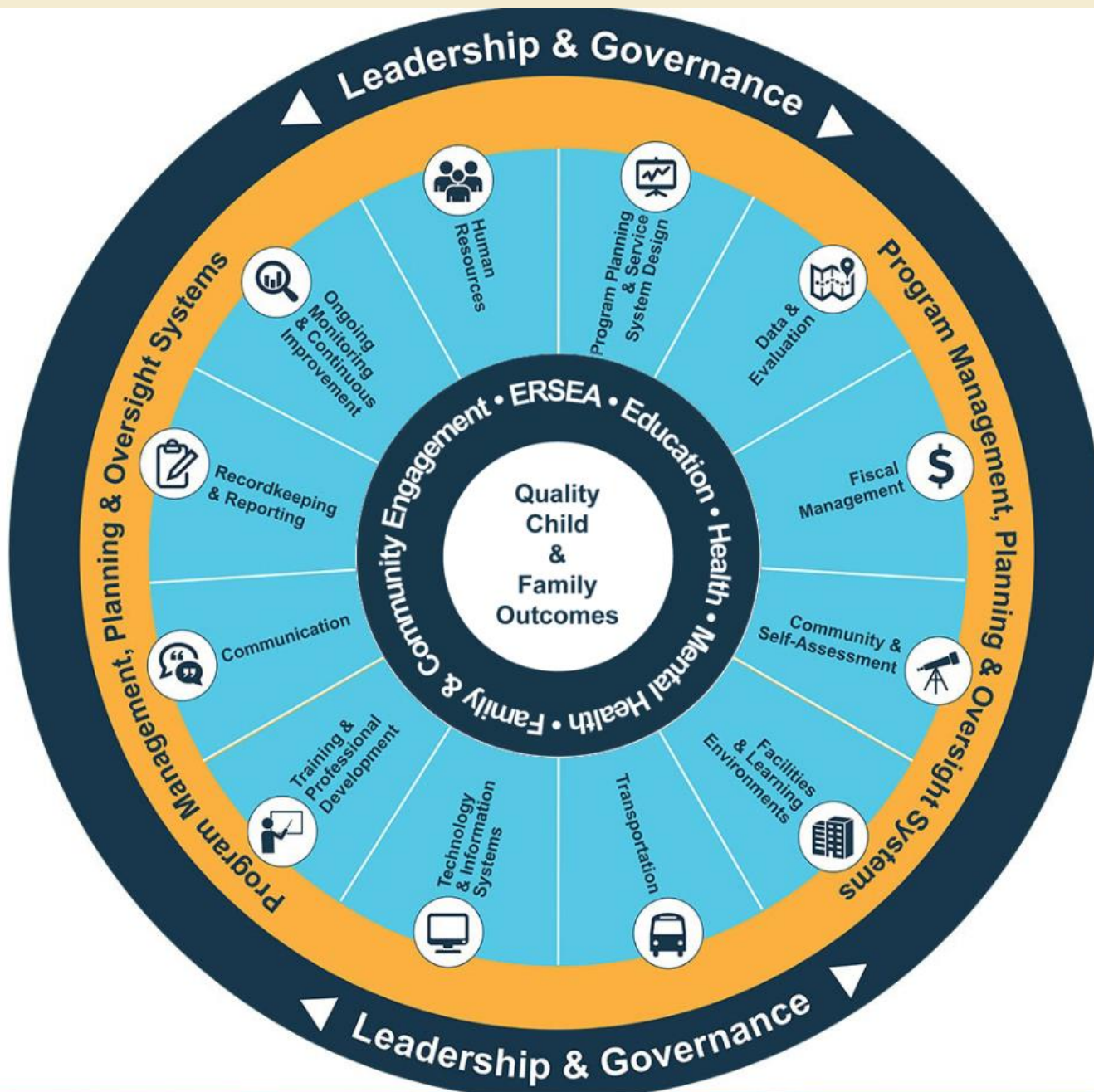
Systems Are Linked





Systems Are Linked





THE NATIONAL CENTER ON
Program Management
and Fiscal Operations



THE NATIONAL CENTER ON
Program Management
and Fiscal Operations



**Program Planning &
Service System Design**



Data & Evaluation



Fiscal Management



**Community &
Self-Assessment**



**Facilities &
Learning Environments**



Transportation



**Technology &
Information Systems**



**Training &
Professional
Development**



Communication



**Recordkeeping &
Reporting**



**Ongoing Monitoring
& Continuous
Improvement**



Human Resources



Diving Deep into One Management System

1. Review all of the information in the tool kit on your table related to your assigned system.
2. Using the material in the tool kit respond to the guiding questions.
3. Be prepared to present your tables responses to the large group in a 3 minute presentation.



Guiding Questions

- Define the purpose of the system in one sentence.
- How does your system influence at least one other system?
- What are the key Performance Standards that relate to this system?
- What are the three resources from ECLKC that you would recommend others review to learn more about your system?
- What are methods used to monitor the systems?
- What are the duties and/or responsibilities of each manager to support the system?
- What are key activities of the system?
- How does the system produce high quality child and family outcomes?
- Identify two or three insights from this activity.



Applying A Systems Approach

- Each break out group will explore a scenario examining it from the perspective of each of the ten management systems.
- Group will use the tool kits to refer to HSPPS and regulations.
- Groups will have:
 - 30 minutes to review scenario and systems tool kits
 - 30 minutes to conduct a staff meeting to determine the best outcomes of the scenario
 - 15 minutes to draft a report to share with the whole group
- Participants can take on roles of key management team members, i.e. Ernie ERSEA, Eloise Education, Heather Health, and Frances Finance. You may also choose roles such as meeting leader, note taker, time keeper and parliamentarian.



THE NATIONAL CENTER ON
Program Management
and Fiscal Operations

Building a Web of Support for our Children and Families





Resources

Early Childhood Learning & Knowledge Center-Quality Teaching and Learning -
<http://eclkc.ohs.acf.hhs.gov/hslc/tta-system/teaching>

Early Childhood Learning & Knowledge Center-Parent, Family, & Community Engagement - <http://eclkc.ohs.acf.hhs.gov/hslc/tta-system/family>

Center on the Social and Emotional Foundations for Early Learning -
<http://csefel.vanderbilt.edu/>

Early Childhood Learning & Knowledge Center – Health -
<http://eclkc.ohs.acf.hhs.gov/hslc/tta-system/health>

Early Childhood Learning & Knowledge Center – Program Design & Management - <http://eclkc.ohs.acf.hhs.gov/hslc/tta-system/operations>